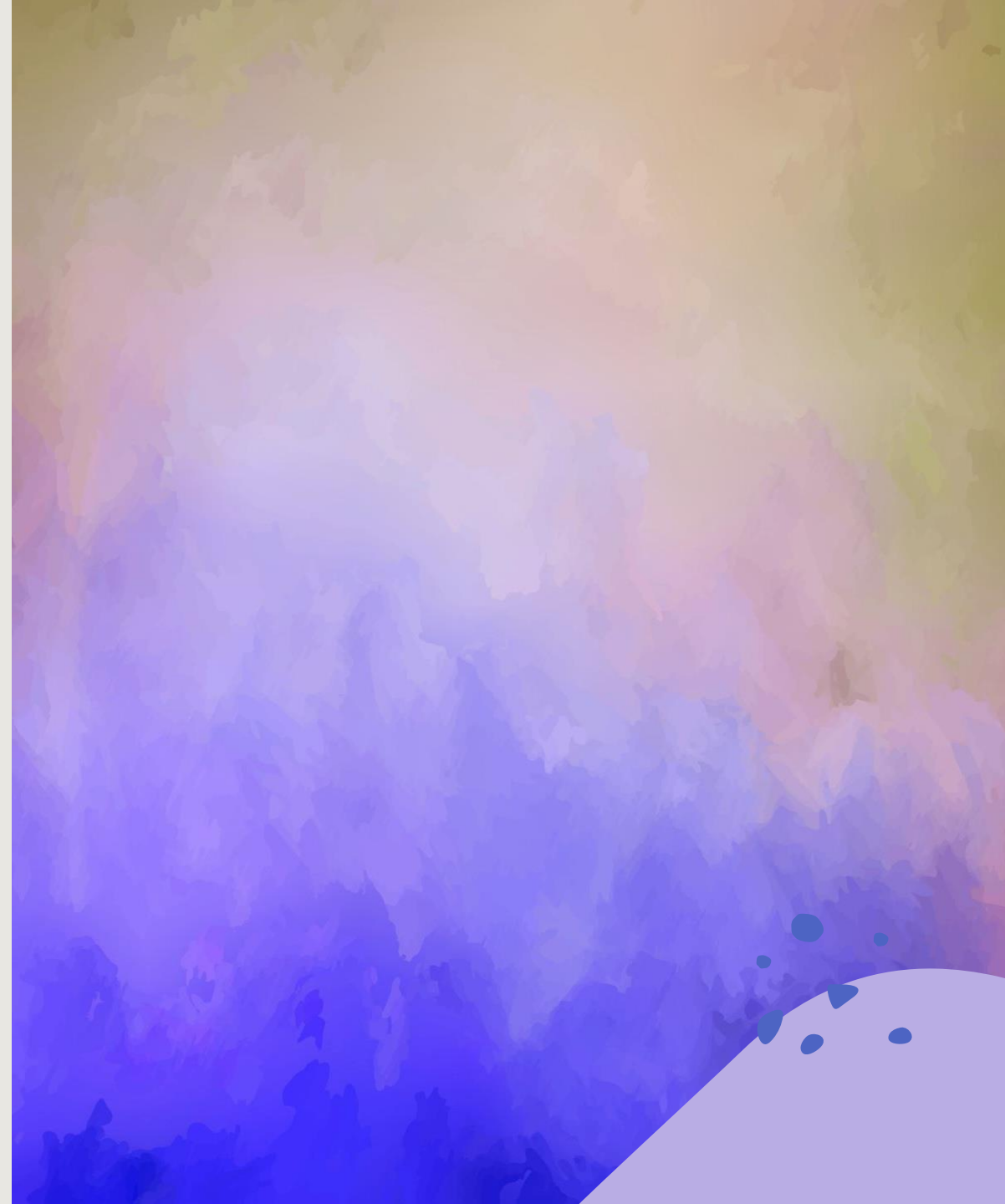


MAP POSTER

BEST OF PAKISTAN

Muhammad Bilal



Poster Theme

The Theme is to Introduce Pakistan visualize those things that this country is famous for like Tourism Places, Traditional Food and its beautiful landscape consist of mountains, deserts, and Coastlines.

BEST OF PAKISTAN

1. Shah Faisal Mosque, Located in the city Islamabad, Built in 1986. The magnificent structure is like a tent in a desert area.
2. Badshahi Mosque, Located in the city Lahore, and Built in 1671. This mosque was constructed by Mughal Emperor Aurangzeb.
3. Khewra Salt Mine, is in Jhelum and declared as second largest salt reserves in the world.
4. Noor Mahal (Palace), Built in 1872, and is in Bahawalpur. This magnificent structure constructed by Nawabs.
5. Mohenjo-Daro, is archeological site in Larkana District that shows ancient Indus valley Civilization, Built in 2500(BCE).
6. The Invisible Slant Waterfall, Located in the Bolan Balochistan.
7. Malam Jabba Ski Resort, This resort is about 2804 meter above sea level and Situated In Swat Valley of KPK Province.
8. Lake Saif-ul-Malook, is a stunning alpine glacial lake, located in Kaghan valley of KPK Province.
9. Rakaposhi Mountain, ranked 27th highest Mountain in the world, located in Nagar valley of Gilgit-Baltistan.
10. K2 Mountain Base Camp, Second highest Mountain in world above 8,000 meters, located in Gilgit-Baltistan Province.

FAMOUS TOURIST PLACES



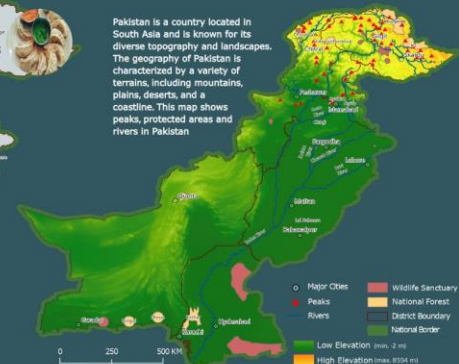
TRADITIONAL CUISINE

1. Aloo Gosht (Potato and Meat Curry), This Cuisine is very popular stew in Punjab Province. It consist of tender meat, fried potatoes, traditional spices, and naan
2. Chicken Biryani (fried or roasted), This Cuisine is very famous in Sindh Province. The main ingredients are rice, chicken, spices, vegetables and Yogurt
3. Sijji (Roasted Chicken) is popular dish in Balochistan province. It is consist of marinated chicken and stuff with rice or potatoes, and made over wood fire.
4. Chapli Kebab (Grilled Flat Meat), This cuisine is famous in KPK Province. This spicy meat patty is consist of minced beef and traditional spices.
5. Dumpling, This cuisine is famous in Gilgit Province. This is consist of flour, chicken and traditional spices.



TOPOGRAPHY AND LANDSCAPE

Pakistan is a country located in South Asia and is known for its diverse topography and landscapes. The geography of Pakistan is characterized by a variety of terrains, including mountains, plains, deserts, and a coastline. This map shows peaks, protected areas and rivers in Pakistan



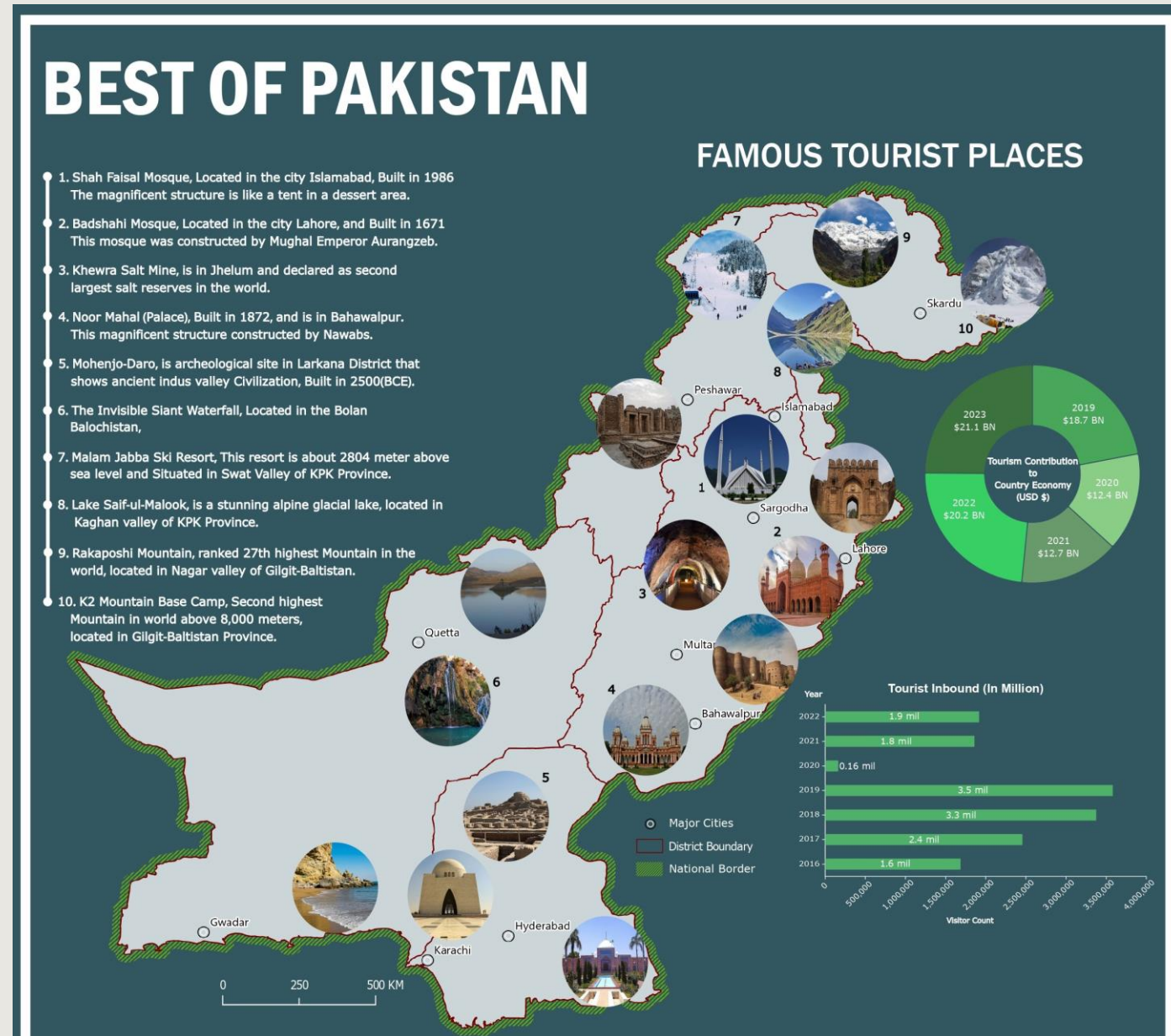
Sources
 Geographical Data (Epi Living Atlas, OSM Data)
<https://tourism.gov.pk/pakistan.htm>
<https://www.tripadvisor.com/>
<https://igdt.pk/>
<https://www.summitpost.org>
<https://prestinettravels.com>

Scan for Web Map about Tourism Site
 Muhammad Bilal
 Design in Geovisualization
 Copernicus Master in Digital Earth
 Olomouc 2023



Maps Explanation

- The main map is visualizing the famous tourist places consist of Archeological Sites, Old Castles, Lakes, Mountains, Religious Sites, Ski resorts, and their details.
- In graphics bar chart is showing the number of tourists that came to visit Pakistan for last 5 years.
- Another graphics the circle shows the amount of tourism contribution to country economy (USD\$)



Maps Explanation(cont)

- The Second map visualize famous traditional cuisine that is popular in different region of Pakistan and their details
- The Third map visualize topography of Pakistan and different landscape features like peaks, National Forest, Wildlife Sanctuary, and Rivers.



Interactive Map

This Poster also embed by QR code that contain the link of ArcGIS Online Web map. The web map help user to identify more details about tourist sites in an interactive manner



Target Audience

- General Public
- Government Agencies (Planning, Security and others)
- Investors
- Researchers

Data

- Open Street Map
- Esri, Living Atlas, Terrain
- Tourism Ministry Pakistan
- Private Tourist Companies



Software's

- ArcGIS Pro
- Inkscape
- Flourish web platform
- Adobe illustrator





*Thank You
For Listening*

